

**Honeywell**

**ADEMCO<sup>®</sup> Optiflex**  
**Video Controller using Symphony**

**User Guide**

# **Table of Contents**

---

*ABOUT OPTIFLEX*.....1

*Introduction To Optiflex*..... 1

*Optiflex Features* ..... 1

    General Features ..... 1

    Secure Remote Viewing ..... 1

*OPERATION*.....3

*Live Video Selection Using Symphony* ..... 3

*How To Set Up Video On The Symphony*..... 4

# About Optiflex

---

## Introduction to Optiflex

Optiflex is an interactive Video System that provides multiplexed local and remote video monitoring for up to six cameras. It can temporarily save up to 10 frames from each of the six cameras (video frames are stored internally in JPEG format) at a rate of one frame / second. Cameras can be triggered either by an external voltage source, or by system events from a Honeywell Vista security system (e.g., burglary alarm at front door). Optiflex can also interface with a Symphony Advanced User Interface via Ethernet to display video on demand. Images may also be viewed on a stand-alone video monitor if desired.

## Optiflex Features

### General Features

- Support for up to six camera inputs
- One Monitor Output
- Integral 4204 Relay Module capability
- Selectable Dwell Time for Guard Tour Viewing (sequential scanning of multiple cameras)
- Time and Date Stamping
- Camera Identification
- Local and/or remote viewing capabilities
- Video captures (up to 19 captures of 10 frames each) viewable through Optiflex Connect (remote viewing) or Optiflex Direct (local viewing on PC)

### Secure Remote Viewing

- Firewall friendly installation
- Video Transmission via Ethernet
- Remote viewing of multiple locations from Symphony Services
- Password Protection
- Selectable Single or Multiple Display



---

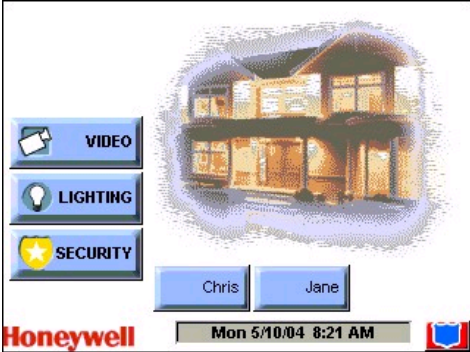



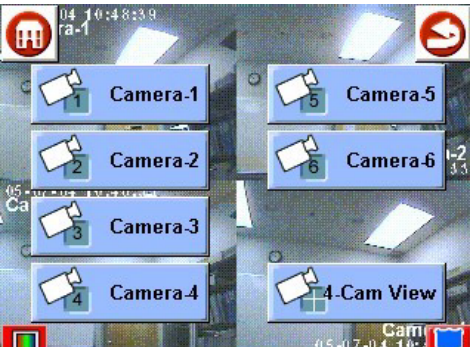
Optiflex Connect is required for remote viewing of video images over the Internet. Optiflex Direct is required for local viewing on a PC. Neither is required for local viewing at a monitor connected directly to the Optiflex unit. For information on how to obtain these services and set your system up for remote viewing and local viewing on a PC, log on to <http://www.security.honeywell.com/hsce/alarmnet/optiflex>.

---



# Operation

## Live Video Selection Using Symphony

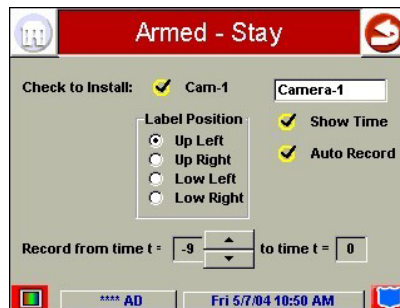
SCREEN	ACTION
	<p>1. On the Symphony “Home” screen press the <b>VIDEO</b> button. The screen displays one of two screens dependant on pre-selected options. Either a screen showing a single camera view is displayed or the quad view screen is displayed.</p> <p> Alarm conditions must be addressed in order to view video. A Zone in trouble may be bypassed in order to allow video to be viewed.</p>
	<p>2. When a single camera view screen is displayed, pressing the center of the screen will display the quad view screen. Pressing the Symphony screen in any area except the center displays the “Video Selection” screen.</p>
	<p>3. When the quad camera view screen is displayed, pressing the center of any camera image will display the single camera screen view for that camera. Pressing the Symphony screen in any other area displays the “Video Selection” screen.</p>
	<p>4. On the Video Selection screen press the button that corresponds to the camera number (Camera-1, Camera-2, Camera-3 or Camera-4) to display that camera’s view.</p> <p>To display Camera-1 through Camera-4 views at one time, press the 4-Cam View button.</p> <p>To exit Video press either the “Home” or “Back” button.</p>

## How to Set Up Video on the Symphony

1. Press the **SECURITY** button on the “Home” screen. The “Arming” screen is displayed.
2. Press the **MORE CHOICES** button. The “More Choices” screen is displayed.
3. Press the **SETUP** button on the “More Choices” screen. The “Setup” screen is displayed.
4. Press the **ADVANCED SETUP** button. The “Enter Authorized Code:” screen is displayed. If required, enter your 4-digit authorization.
5. Press the **Video Setup** button. The Video Setup screen is displayed.



6. Edit Camera-1 name, label and position. Save the data. Repeat this for each camera.



7. Select default camera for local viewing on Symphony.
8. Select NTSC default camera for NTSC composite monitor viewing.

## **ONE YEAR LIMITED WARRANTY**

Honeywell International Inc., acting through its Security & Custom Electronics business ("Seller"), 165 Eileen Way, Syosset, New York 11791, warrants its security equipment (the "product") to be free from defects in materials and workmanship for one year from date of original purchase, under normal use and service. Seller's obligation is limited to repairing or replacing, at its option, free of charge for parts, labor, or transportation, any product proven to be defective in materials or workmanship under normal use and service. Seller shall have no obligation under this warranty or otherwise if the product is altered or improperly repaired or serviced by anyone other than the Seller. In case of defect, contact the security professional who installed and maintains your security equipment or the Seller for product repair.

This one year Limited Warranty is in lieu of all other express warranties, obligations or liabilities. THERE ARE NO EXPRESS WARRANTIES, WHICH EXTEND BEYOND THE FACE HEREOF. ANY IMPLIED WARRANTIES, OBLIGATIONS OR LIABILITIES MADE BY SELLER IN CONNECTION WITH THIS PRODUCT, INCLUDING ANY IMPLIED WARRANTY OF MERCHANTABILITY, OR FITNESS FOR A PARTICULAR PURPOSE OR OTHERWISE, ARE LIMITED IN DURATION TO A PERIOD OF ONE YEAR FROM THE DATE OF ORIGINAL PURCHASE. ANY ACTION FOR BREACH OF ANY WARRANTY, INCLUDING BUT NOT LIMITED TO ANY IMPLIED WARRANTY OF MERCHANTABILITY, MUST BE BROUGHT WITHIN 12 MONTHS FROM DATE OF ORIGINAL PURCHASE. IN NO CASE SHALL SELLER BE LIABLE TO ANYONE FOR ANY CONSEQUENTIAL OR INCIDENTAL DAMAGES FOR BREACH OF THIS OR ANY OTHER WARRANTY, EXPRESS OR IMPLIED, OR UPON ANY OTHER BASIS OF LIABILITY WHATSOEVER, EVEN IF THE LOSS OR DAMAGE IS CAUSED BY THE SELLER'S OWN NEGLIGENCE OR FAULT. Some states do not allow limitation on how long an implied warranty lasts or the exclusion or limitation of incidental or consequential damages, so the above limitation or exclusion may not apply to you.

Seller does not represent that the product may not be compromised or circumvented; that the product will prevent any personal injury or property loss by burglary, robbery, fire or otherwise; or that the product will in all cases provide adequate warning or protection. Buyer understands that a properly installed and maintained alarm may only reduce the risk of a burglary, robbery, fire or other events occurring without providing an alarm, but it is not insurance or a guarantee that such will not occur or that there will be no personal injury or property loss as a result. CONSEQUENTLY, SELLER SHALL HAVE NO LIABILITY FOR ANY PERSONAL INJURY, PROPERTY DAMAGE OR OTHER LOSS BASED ON A CLAIM THE PRODUCT FAILED TO GIVE WARNING. HOWEVER, IF SELLER IS HELD LIABLE, WHETHER DIRECTLY OR INDIRECTLY, FOR ANY LOSS OR DAMAGE ARISING UNDER THIS LIMITED WARRANTY OR OTHERWISE, REGARDLESS OF CAUSE OR ORIGIN, SELLER'S MAXIMUM LIABILITY SHALL NOT IN ANY CASE EXCEED THE PURCHASE PRICE OF THE PRODUCT, WHICH SHALL BE THE COMPLETE AND EXCLUSIVE REMEDY AGAINST SELLER. This warranty gives you specific legal rights, and you may also have other rights which vary from state to state. No increase or alteration, written or verbal, to this warranty is authorized.

# Honeywell

165 Eileen Way, Syosset, NY 11791  
Copyright© 2004 Honeywell International Inc.

[www.honeywell.com/security](http://www.honeywell.com/security)



K0949V2 11/04 Rev.A